



C A T A L O G





WELCOME TO THE WORLD OF YUKON ADVANCED OPTICS

Clarity is vital to the success of any important decision. Clearly seeing one's goals is fundamental to life, to business, and even to outdoor adventure. We at Yukon Advanced Optics pride ourselves on being a choice brand for most individuals who need to see in the dark.. all without breaking the bank. By making the move toward new technologies, we have established ourselves ahead of the market in digital night vision. Considering our experience in high-tech, it was just a matter of time until the development of new concepts in daylight optics. Our goal is to provide you with the best, most innovative products that can help you observe well defined images under any circumstance, in any condition. Day or night, clarity is what we do best. Yukon helps you see ahead clearly... then it is up to you to decide what is next.

YUKON ADVANCED OPTICS





TABLE OF CONTENTS

NIGHT VISION SCOPES	6
NIGHT VISION MONOCULARS NVMT	8
NIGHT VISION SCOPES	10
DIGITAL NIGHT VISION RANGER & RANGER PRO	12
NIGHT VISION BINOCULARS & GOGGLES	14
NIGHT VISION BINOCULARS & GOGGLES TRACKER	16
NIGHT VISION RIFLESCOPES	18
GEN1 NIGHT VISION RIFLESCOPES	20
GEN2+ NIGHT VISION RIFLESCOPES	22
NIGHT VISION ACCESSORIES	24
BINOCULARS	28
INSIGHT & INSIGHT PRO BINOCULARS	30
FUTURUS & FUTURUS PRO BINOCULARS	32
SPOTTING SCOPES	34
SPOTTING SCOPES	36
SPOTTING SCOPES ACCESSORIES	38





catalog 2008

NIGHT VISION OPTICS



NIGHT VISION

S C O P E S

NIGHT VISION OPTICS



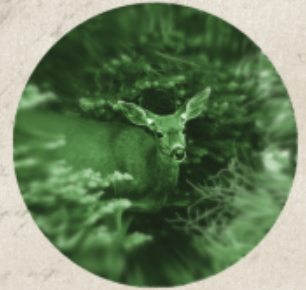
EXTREME VISION

Exelon 3x50 & 4x50 | NV 5x60 | Patrol & Patrol -D | NVMT & NVMT Spartan | Digital NV Ranger & Ranger PRO



EXELON

NIGHT VISION SCOPE



- HIGH APERTURE RATIO
- R-CONTACT OPTICAL SYSTEM
- ENHANCED RESOLUTION -
- COMPARABLE TO GEN. 2+
- "FLAT" EDGE-TO-EDGE IMAGE
- LARGE VIEWING RANGE
- SUPERIOR ERGONOMICS

RANGER

DIGITAL NV



- BEST VIEWING RANGE IN ITS CATEGORY
- 5x IMAGE MAGNIFICATION
- HIGH RESOLUTION
- BRIGHT AND SHARP IMAGE
- VIDEO OUTPUT
- "INVISIBLE" LONG-RANGE IR ILLUMINATOR
- EXTERNAL POWER SUPPLY CONNECTIVITY



NIGHT VISION NVMT

M O N O C U L A R S

NIGHT VISION OPTICS



24022 The NVMT 2 (3x42)

Possibly the most versatile in the NVMT line. Its magnification is high enough to use for long-distance observation, but the body is compact enough to fit easily in a pocket.

Accessories:

Universal Tripod, Digital Camera Adapter, NVMT IR Flashlight, DSAS, NVMT Objective Lenses, Yukon ATC Video Attachment



24021 NVMT 1 (2x24)'s

magnification and wide field of view makes this model an excellent scope for general observation.

Accessories:

Universal Tripod, Digital Camera Adapter, DSAS, NVMT IR Flashlight, NVMT Objective Lenses, Yukon ATC Video Attachment



24021WP The NVMT 1 (2x24) WP

Waterproof body makes it an ideal choice whether in the jungle or out on the open sea.

Accessories:

Universal Tripod, Digital Camera Adapter, DSAS, NVMT IR Flashlight, Yukon ATC Video Attachment



24024 NVMT 4 (1x24)

24025 Yukon's NVMT 1x24 Head Mount Kit

Fashioned after military-tested designs, the NVMT4 Head Mount Kit provides hours of comfortable hands-free operation. Perfect for night airsoft games and night hiking.

Accessories: Universal Tripod, Digital Camera Adapter, DSAS, NVMT IR Flashlight, Yukon ATC Video Attachment



NVMT SPARTAN

Is a new line of night vision scopes that includes three models – 2x24 (mod. #24121), 3x42 (mod. #24122) and 4x50 (mod. #24127). NVMT SPARTAN is designed for observation in twilight or complete darkness. The new more powerful IR Illuminator significantly enhances the picture quality.



24022WP The NVMT 2 (3x42) WP

Is a unique scope that features a fully waterproof, compact, rugged, rubber armor body with 3x magnification and fully multi-coated optics.

Accessories: Universal Tripod, Digital Camera Adapter, DSAS, NVMT IR Flashlight, Yukon ATC Video Attachment



24027 The NVMT 3 (4x50)

Unit's impressive magnification and light gathering capability is an excellent choice for night vision photography, game-spotting and surveillance.

Accessories: Universal Tripod, Digital Camera Adapter, DSAS, NVMT IR Flashlight, NVMT Objective Lenses, Yukon ATC Video Attachment

The NVMT embraces modern, cutting-edge technology without forgetting practicality. Yukon's durable, lightweight, compact NVMT (Night Vision Multi Task) line is as versatile as night vision comes. Embark upon a night hike, finish climbing a mountainside at 3 a.m. or reach your destination, no matter the time. This monocular has excellent light amplification performance, while the exclusive PULSE™ built-in infrared illuminator adds additional sharpness to the viewing range with minimal battery drainage. With the simple use of accessories, the palm-sized, water-resistant NVMT can be modified from a riflescope to a head mountable goggle or to a photo and video component. Waterproof NVMT models provide complete damage protection from water.

A key component to the originality of the NVMT is that it sheds the burden of a one-dimensional item and evolves into a multi-functional system, thereby allowing the scope to be used virtually anywhere. Versatility is the NVMT's middle name. With the numerous NVMT accessories, the unit can be transformed instantly to suit almost anyone's needs. Yukon's NVMT Rifle Conversion Kit is perfect for airsoft, paintball, pest control or any other night gun sports that require a short-range night vision scope. It is designed for use with a red dot laser as an aiming mark, which can be attached to the rifle mount or could be barrel mounted. Add a 24 mm, 42 mm or 50 mm objective lens for additional magnification and field of view options. Yukon also offers a head mount for those who desire hands-free operation. The NVMT Night Adapter for Optical Riflescope allows the NVMT 1(2x24) or NVMT4 (1x24) to be fixed to the eyepiece of a standard day riflescope. This kit is intended for recreational shooting in night conditions or night sports shooting plus pest control (rats, rabbits, crows etc.) using pre-charged airguns.

TECHNICAL SPECIFICATIONS

Model	24021 / 24121	24021 WP	24022 / 24122	24022 WP	24024/24025	24027 / 24127
Image Tube Generation	1	1	1	1	1	1
Magnification	2	2	3	3	1	4
Lens diameter, mm	24	24	42	42	24	50
Resolution, lines per mm	36	36	36	36	36	36
Field of View, °	30	30	20	20	30	15
Diopter Adjustment, D	+/-4	+/-4	+/-4	+/-4	+/-4	+/-4
Max. Range of Detection, m	200	200	250	250	150	300
IR Illuminator range, m	100 / 150	100	100 / 150	100	100	100 / 150
Grade of water-resistance (IP Standard)	-	IPX6/IPX7	-	IPX6/IPX7	-	-
Power Supply, V	3 (CR123A)	3 (CR123A)	3 (CR123A)	3 (CR123A)	3 (CR123A)	3 (CR123A)
Tripod Mount, inch	1/4 (2 sockets)	1/4 (2 sockets)	1/4 (2 sockets)	1/4 (2 sockets)	1/4 (2 sockets)	1/4 (2 sockets)
Dimensions, mm	142x82x60	142x82x60	162x82x60	162x82x60	142x82x60	191x87x60
Weight, kg	0.38	0.38	0.5	0.5	0.38/0.6	0.6



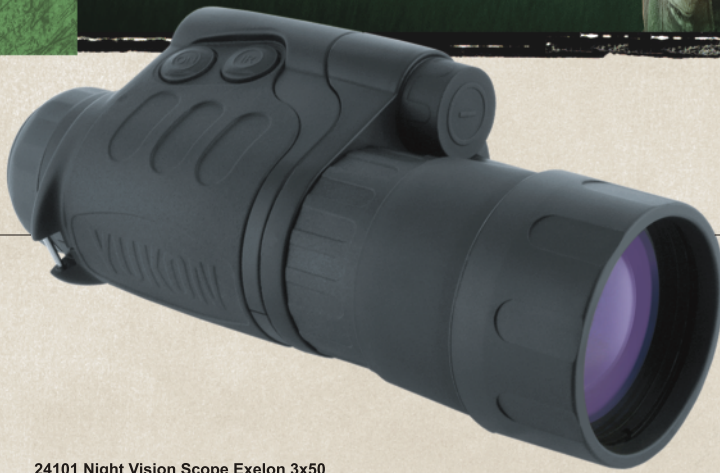
NIGHT VISION

S C O P E S

NIGHT VISION OPTICS



EXTREME
VISION



24101 Night Vision Scope Exelon 3x50
24102 Night Vision Scope Exelon 4x50

Familiar external appearance but brand new capabilities inside.

Accessories:

Universal Tripod, Digital Camera Adapter, DSAS, NVMT IR Flashlight, Yukon ATC Video Attachment



With the Exelon 3x50
(CF-Super Tube inside)

At the core of the Exelon is the unique combination of specially designed R-Contact optics and the new CF-Super (Super Gen 1+) Image Intensifier Tube, created specifically for each other such that they will not work with any other system. This exclusive technological development will feature in a full range of models from Yukon's future product line. The result of this development is the highest edge-to-edge resolution performance ever seen in a budget consumer NV product. Comfortable in use and dependable, as all Yukon products, the Exelon is one of the most versatile NV models in the lineup. Thanks to the improved resolution, video and photography possibilities are more evident. Paired with Yukon's NV accessories the Exelon offers the best performance currently available in budget intensifier tube night vision systems.



24065 NV 5x60

Good light-gathering capacity and resolution with our highest image magnification.

Accessories:

Universal Tripod, Digital Camera Adapter, NVMT IR Flashlight, Yukon ATC Video Attachment





24081 Patrol 2x24

Easy to Use
Light Weight
Wide Field of View
Accessories:
Universal Tripod, Digital
Camera Adapter,
NVMT IR Flashlight



24082 Patrol-D 3x42

Comes with 42 mm doubler lens
which is removable to leave a
2x24 unit.
Accessories:
Universal Tripod, Digital Camera
Adapter, NVMT IR Flashlight

The unique and exclusive R-Contact Lens/CF-Super Tube combination of the EXELON gives the highest resolution currently available from budget NV systems. The high magnification/wide field of view makes the EXELON ideally suited for observing moving objects. Excellent ergonomics mean the EXELON can be easily transported and its showerproof body allows use in the Great Outdoors - hunting, fishing, hiking as well as for wildlife observation purposes. Coupled with various accessories (IR flashlight, Digital Camera Attachment, ATC Video Attachment), the EXELON is not merely an observation device, but also an excellent means for image recording. The NV 5x60 Night Vision Monoculars 60mm objective lens offers the highest image magnification in our range. Despite the high magnification/large lens diameter, the unit has minimal dimensions and weight. Offering 5x magnification, the image also has good resolution. Viewing distances of a quarter of a kilometer should be easy for the NV 5x60 - which makes it a useful tool not only for hunters in the field, but also for individuals who need a night vision device for security, wildlife observation etc. The Patrol 2x24 Monocular is an entry-level model featuring lightweight, compact dimensions and high ergonomics to aid intensive and prolonged use in motion. A wide field of view allows users to clearly observe objects that are in motion. The Patrol-D 3x42 Night vision device is a set consisting of the Patrol 2x24 night vision device and a 1.5x Lens Converter with a 42mm front optic increasing the magnification of the device up to 3 times.

TECHNICAL SPECIFICATIONS

Model	24101	24102	Model	24065	24081	24082
Tube type	CF-Super	CF-Super	Image Tube Generation	1	1	1
Image Tube Gain, times	≥ 1200	≥ 1200	Magnification	5	2	3
Magnification	3	4	Lens diameter, mm	60	24	42
Lens diameter, mm	50	50	Resolution, lines per mm	40	36	36
Field of View, °	13.5°	13.5°	Field of View, °	12°	23°	15°
Focus Range, m	1 ~ ∞	1 ~ ∞	Diopter adjustment, D	± 5	± 5	± 5
Range of Detection / Recognition, m	500 / 230 ~ 270	500 / 230 ~ 270	Viewing Range, m	300	150	200
Diopter adjustment, D	± 5	± 5	IR Illuminator range, m	100	100	100
Resolution, lpm, field of view - center / edge	≥ 42 / ≥ 32	≥ 42 / ≥ 32	Power Supply, V	CR123A (3V)	2xAAA (3V)	2xAAA (3V)
Power Supply	CR123A (3V)	CR123A (3V)	Operating time (IR off/on), h	72 / 20	72 / 20	72 / 20
Tripod Mount, inch	1/4 (2 sockets)	1/4 (2 sockets)	Tripod Mount, inch	1/4	1/4	1/4
Dimensions, mm	191x87x60	191x87x60	Dimensions, mm	206x70x93	140x85x55	202x87x60
Weight, kg	≈ 0.5	≈ 0.5	Weight, kg	0.66	0.38	0.4



RANGER I RANGER PRO

DIGITAL NIGHT VISION

NIGHT VISION OPTICS



28041 Digital NV Ranger 5x42

RANGER is equipped with a built-in, high power, invisible Infrared (IR) Illuminator that has variable power output and a memory controller. Together, these features provide effective viewing in most night conditions.

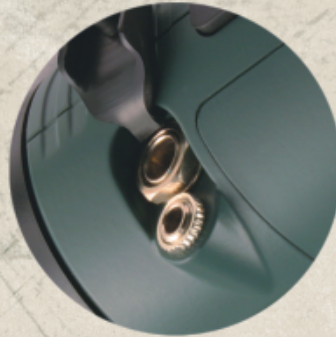


27041 Yukon MPR Mobile Player/Recorder

28041VK Digital Night Vision Ranger 5x42 Video Kit 27041 Yukon MPR Mobile Player/Recorder

The MPR allows recording of images generated by the matrix of the Ranger 5x42. View images during or after recording on a built-in 2.5" TFT display. The Yukon MPR also includes an extra case to fix it to the bodyshell of the Ranger/Ranger Pro 5x42 when in operation (see chapter "Night Vision Accessories" for further information).





Ranger has a built-in video-out connector which can be used to pair the device with a monitor or to record images via a separate recording device.

Ranger models are supplied with two battery holders, a 12V car lead and a mains adapter that allows the device to connect to a household power outlet



28046 Digital NV Ranger Pro 5x42

Featuring impressive 5x image magnification and large viewing range – up to 600 metres. This is due to a highly sensitive CCD array and new Sum Light™ software technology employed in the Ranger Pro device. The Ranger Pro 5x42 offers the closest digital NV performance to Gen 2 image intensifiers both in image sharpness and brightness.

Night vision, long dominated by Starlight systems, is entering a new phase with digital imaging technology. Yukon Advanced Optics® has staked its claim for leadership within this field by offering a new line of digital NV Ranger models that cover several performance and price categories. The innovative approach customers have come to expect from Yukon is clear in the Ranger series. The Ranger's high magnification, increased observation range, and invisible IR illuminator are just a few characteristics that separate Yukon's Ranger from the rest of the market. The Ranger is designed to be the most powerful and versatile unit available— complete with a rugged body packed with a sizable amount of innovations. By integrating Yukon's well-known dual IR illuminator technology, which extends the traditional IR range into a capable multi-zone unit, the Ranger satisfies even demanding applications.

TECHNICAL SPECIFICATIONS

Model	28041	28046
Magnification, x	5	5
Lens diameter, mm	42	42
Field of View, °	5	5
Viewing Range, m	5 ~250	5 ~600
Eye Relief, mm	12	12
Exit Pupil, mm	5	5
Resolution, lines per mm	40	40
Camera resolution, pixels	510x492	510x492
IR Wavelength, nm	940	940
Power Supply	7,2 ~ 9 V (6xAA)	7,2 ~ 9 V (6xAA)
Battery Life (with/without IR IR), hour	3 / 10	3 / 10
Input Power Supply	DC 6 ~ 12 V (1000 mA)	DC 6 ~ 12 V (1000 mA)
Video Output Signal Standard	CCIR / EIA *	CCIR / EIA *
Operating Temp, °C	-20°C ~ +35°C	-20°C ~ +35°C
Dimensions, mm	170x116x76	170x116x76
Weight (with / without batteries), kg	0.8 / 0.65	0.8 / 0.65

* - depending on the region of sale





NIGHT VISION

BINOCULARS & GOGGLES

NIGHT VISION OPTICS



- Tracker DL 2x24 | Tracker PRO 2x24 | Tracker LT 2x24 |
- Tracker 2x24 WP | Tracker RX 3.5x40 | Tracker 3x42 |
- Tracker 1x24 Goggles |



TRACKER NV BINOCULARS



NVB TRACKER DL 2x24:
Fully Multi-Coated Lenses
Central Focusing
Wide Field of View
High Quality Picture

Compact & Lightweight
Deluxe Padded Soft Carrying Case
Exclusive ECLIPSE™ Lens Cap System
LCD/Clock Readout (DL)
Dual IR Unit (DL/PRO)



NIGHT VISION TRACKER

B I N O C U L A R S & G O G G L E S

NIGHT VISION OPTICS



25021 NVB Tracker DL 2x24 Dual IR Unit, LCD Unit
25022 NVB Tracker PRO 2x24 Dual IR Unit
25023 NVB Tracker LT 2x24 Single IR Unit

The NVB Tracker utilizes Yukon's newly designed lens cap system (which removes lens cap hassles), a compact body, center focusing wheel, and a LCD readout for a comfortable and adaptable binocular

25028 NVB Tracker 3x42

Features the highest combination light-gathering capacity and magnification.
Long-range IR flashlight.
Individual focus objective lenses.



25023WP NVB Tracker 2x24 WP

Has a higher level of moisture protection (IPX5 in accordance with IEC 60529 standard).



25024 NVB Tracker RX 3.5x40

Is the highest magnification NVB in the Tracker series. It comes with removable, individual, collimated doubler lens and can be transformed to a 2x24 unit by removing the 40 mm lenses.

29093 NVB Tracker 2x24 Doubler

can be used with all Tracker 2x24 models. This feature allows you to easily increase the magnification of these binoculars from 2x to 3.5x. Not usable with Tracker 1x24 Goggles or Tracker 3x42.



25025 NV Tracker 1x24 Goggles

Comfortable hands-free observation even when in motion. The design of the goggles minimises fatigue if used for long periods of time. They offer a stable position in front of the eyes when running, pacing or during harsh turns of the head. The headmount allows adjustment of the device in various directions.



Tracker 2x24 Night Vision Binoculars are compact, lightweight and provide a wide field of view. The shower resistant body increases the binoculars versatility, while the central focusing knob and fixed eye span distance provide comfort and reliability. The twin night vision tubes, housed in the rugged, rubber armored body, provide high-quality viewing in nighttime conditions. Tracker binoculars utilize built-in PULSE™ infrared illuminators for added image clarity, even in total darkness. The soft, one-piece eyecup prevents external light distortion and light leakage from the device, allowing the user to remain hidden in the night. The exclusive ECLIPSE™ lens cap system of Tracker 2x24 is an additional feature that allows the lens cap to be moved out of the way with a simple twist of the wrist. The Tracker's 2x24 magnification is perfect for general observation, outdoor activities, hunting, commercial and sport fishing, search and rescue. The Tracker 3x42 binoculars are designed on the strengths of the Tracker 2x24 binoculars. They offer the highest maximize magnification and light gathering capacity of the current Tracker range. Light-weight and compact size make the Tracker an ideal choice for the outdoor lifestyle.

TECHNICAL SPECIFICATIONS

Model	25021	25022	25023	25023 WP	25024	25025	25028
Image Tube Generation	1	1	1	1	1	1	1
Magnification	2	2	2	2	2/3.5	1	3
Lens diameter, mm	24	24	24	24	24/40	24	42
Field of View, °	30	30	30	30	30/15	30	20
Eye Relief, mm	12	12	12	12	12	12	12
Diopter Adjustment, D	+/-5	+/-5	+/-5	+/-5	+/-5	+/-5	+/-5
Max. Range of Detection, m	200	200	200	200	200/250	150	250
IR Illuminator, main/auxiliary	Yes/Yes	Yes/Yes	Yes/No	Yes/No	Yes/No	Yes/No	Yes/No
Grade of water-resistance (IP Standard)	-	-	-	IPX5	-	-	-
Power Supply, V	3 (CR123A)	3 (CR123A)	3 (CR123A)	3 (CR123A)	3 (CR123A)	3 (CR123A)	3 (CR123A)
Length, mm	175	175	175	175	175/225	175	184
Width, mm	123	123	123	123	123	123	123
Height, mm	72	72	72	72	72	72	72
Weight, kg	0.6	0.6	0.6	0.6	0.8	0.8	0.7
LCD/Clock Readout, yes/no	Yes	No	No	No	No	No	No



**EXTREME
VISION**

NIGHT VISION

R I F L E S C O P E S

NIGHT VISION OPTICS

NVRS TITANIUM & TACTICAL | NVRS-F |
SENTINEL | SENTINEL G2+ | PHANTOM



CLEAR ON TARGET

PHANTOM



SENTINEL



NVRS-F





GEN1 NIGHT VISION

R I F L E S C O P E S

NIGHT VISION OPTICS



26014T NVRS-F 2.5x50

The focusable front objective lens provides a higher quality, sharper image through the whole targeting range. Allows exceptionally close focusing down to 2m or 4m with the doubler lens.

Accessories:

Laser pointer, AK Side Mount Adapter, IR Flashlight, DSAS, Doubler Lens



26013 NVRS Titanium 2.5x50

Equipped with a powerful 50 mm lens to provide higher resolution and light-gathering capabilities. Front lens focus is fixed.

Accessories:

Doubler Lens, AK Adapter



26013T NVRS Tactical 2.5x50

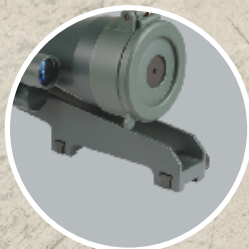
Adds dual Weaver accessory mounting rails.

Accessories:

Laser pointer, AK Side Mount Adapter, IR Flashlight, DSAS, Doubler Lens



AK Side Mount



Los Mount



Weaver 7/8" Mount
Weaver-Long 7/8" Mount



Weaver - Auto 7/8" Mount
Prism 14/200 Mount

Most of the YUKON Riflescopes have a wide range of mounts for a weapon, including Weaver/Weaver-Auto mounts, AK Side Mount, "Los" mount (for Russian rifles), Prism 14/200 mount. The mount Weaver-Auto allows essentially to speed up installation and removing process. For this purpose it is enough to fasten the fastening unit with the handle. The sight does not demand any ranging fire after reinstalling.



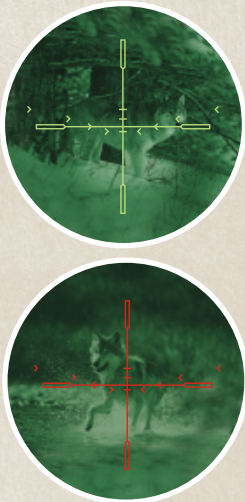
26015T Sentinel 2.5x50
26016T Sentinel 3x60

REMOTE CONTROL

The remote control duplicates the "on/off" function of the device and IR illuminator. The third button is intended for a quick start-up of the riflescope and IR illuminator (the device works only when the button is kept pressed). This is very convenient when constant observation is not conducted in order to find the appropriate position, take aim and shoot.



TWO-COLOR ULTRA-FINE RANGE-FINDING RETICLE



The Sentinel reticle has a brightness control option and a range-finding scale to facilitate adjustment when shooting at different distances (provided the shooter knows the size of the target). Initially, the riflescope should be sighted at a known range (say 50m) on the central cross-hair. Distance is determined by placing a target with known width (say 0.5m) between the marks of the ranging chevrons ">.<". If the target fits between the marks, you should make the vertical adjustment according to the mark. Thus, you can make adjustments when shooting at distances of 15, 25, 50 and 100m. Please Note: These figures/ranges will totally depend on the size of target – 50m may work for a boar sized target, but would need to be far less for a rabbit sized target.

The reticle colour can be switched at any time from green-on-green to red-on-green to optimize performance depending on the contrast of the target/surrounding vegetation. The green reticle allows you to turn reticle brightness right down such that you can see through it thus maximizing range. The reticle color can be changed by the simple push of a button.



RUGGED & RELIABLE

The Sentinel is remarkable for its modern, light weight and rugged design due to modern plastic and Titanium employed in the riflescope's manufacture. The riflescope can operate under precipitation of any intensity (IPX4 rating against water intrusion according to IEC 60529). The Weaver 7/8" rail fixed on the left side of the body is used for attaching additional accessories (IR flashlight, DSAS, red dot laser).



LOW BATTERY INDICATOR

The Sentinel features LED indicators which show that the riflescope and the IR illuminator are functional and indicate the level of the battery charge. When the batteries are charged, the top LED indicator light is green. As the battery runs down, this LED will change to red which indicates that the riflescope will still function (with the IR illuminator on) for approximately half an hour before the battery is exhausted. The bottom red LED lights when the IR illuminator is operational. The moderate intensity of the LED indicators should not illuminate the shooter.



INTERNAL FOCUSING

The optical system employs an internal focusing mechanism (from 5m to infinity) with 'definite' click-stop focus positions. The focusing provides clear images at extremely short distances as well as optimising quality at all distances within the riflescope's working range.

Popular among hunters and sporting enthusiasts, the NVRS line of Titanium Riflescopes are designed to be the most modern and best value on the market today and the updated line looks and works better than ever. All new models in the NVRS Titanium line are equipped with Yukon's own quick-release mount and improved optics. With an impressive array of available night vision tubes, they're the perfect NVRS for any task. The standard accessory package for the NVRS line includes a remote control and a 'Stay-On' carrying.

The SENTINEL combines traditional Yukon qualities - modern design, ergonomics, dependability, simplicity and interface - with a high degree of functionality. The optical system, with its internal focusing, provides a contrasty image. The scope's optical elements are made of high quality optical glass and have multiple anti-reflective coatings. The lens cap is permanently attached to the body to prevent it being lost and can be slid back down the body when observing or shooting.. The reticle has a range-finding scale and hold-over/hold-under marks, so you can make adjustments when shooting (depending on the distance to the target), and you can switch the reticle's color from red to green. The stabilized, noiseless power supply eliminates reticle shift, even when the batteries are nearly exhausted. When hunting, the quick start-up function of the riflescope and IR illuminator can be activated by the remote control. Extra tube protection guarantees use with popular calibres up to .308. The Sentinel is well protected against moisture and can operate under precipitation of any intensity. All these features make this riflescope a dependable instrument for night hunting.

TECHNICAL SPECIFICATIONS

Model	26013	26013T	26014T	Model	26015T	26016T
Image Tube Generation	1	1	1	Image Tube Generation	1	1
Magnification	2.5	2.5	2.5	Magnification, x	2.5	3
Lens diameter, mm	50	50	50	Lens diameter, mm	50	60
Field of View, °	15	15	15	Field of view, °	13	11
Resolution, lines per mm	35	35	35	Focusing Range, m	5 ~ ∞	5 ~ ∞
Eyepiece Adjustment, D	+/-4	+/-4	+/-4	Recognition range, m	200	250
Objective Lens Adjustment, m	No	No	1 ~ ∞	Eye relief, mm	45	45
Recognition Range, m	200	200	200	Diopter Adjustment, D	±2.5	±2.5
Power Supply, V	3 (2xAA)	3 (2xAA)	3 (2xAA)	Resolution, lines/mm, min.	35	35
Dimensions, mm	255x80x85	255x80x85	255x80x85	Battery life (without IR), hour	70	70
Weight, kg	0.88	0.95	1.0	Power Supply, V	3 (2xAA)	3 (2xAA)
				Dimensions, mm	270x90100	307x90100



GEN2+ NIGHT VISION

R I F L E S C O P E S

NIGHT VISION OPTICS



EXTREME VISION

26057T / 26067T Phantom 3x50
26058T / 26068T Phantom 4x60

REMOTE CONTROL

The remote control has 3 buttons - two duplicate the "On/Off" function of the device and IR illuminator. The third button is intended for a quick start-up of the riflescope and IR illuminator (the device works only when the button is kept pressed). This function is very convenient when constant observation is not required or you just want the IR on momentarily.



PROTECTIVE LENS CAP

A soft rubber cap with a pin hole (for testing in daylight) is permanently attached to the bodyshell and protects the lens from water, scratches and chips when the scope is not in use. When using the scope, simply slide the lenscap back along the side of the bodyshell.



STABILISED POWER SUPPLY

The riflescope can be powered with either 1 x AA (1.5V) Alkaline/Lithium or 1 x CR123A (3V) Lithium battery. The stabilised voltage of the power supply system ensures correct operation even when the battery is nearly exhausted and also prevents reticle shift/brightness changes. Vertical positioning of the battery in the battery compartment enhances reliability of energy supply when recoil occurs during shooting, maximises the reliability under recoil



HIGH PERFORMANCE SPECIFICATIONS

The Phantom is rugged and reliable due to the high grade glass-filled modern plastics employed in the design of the riflescope. The device can be operated in precipitation of any intensity (waterproof to IPX6 rating against water intrusion according to IEC 60529), i.e any level of sprayed water. The nitrogen purged optical channel prevents offers fogproofing caused by temperature differences or high humidity.



INTERNAL FOCUS OPTICAL SYSTEM

The high quality, fully multicoated optical system gives a sharp and contrasty image at all distances within the working range. The focusing mechanism operates via a positive click-stopped focus wheel on the right side of the bodyshell that allows focusing from 5m. to infinity. The focusing provides clear images at extremely short distances as well as optimising quality at all distances within the riflescope's effective working range.



EXTRA FEATURES

The Phantom is equipped with a powerful, removable IR illuminator offering a variable beam from spot to flood. A Weaver 7/8" rail on the left side of the body is used for attaching additional accessories (IR flashlight, DSAS, red dot laser). An 'Instant On' button allows momentary illumination of the tube/reticle for a quick look capability - release the button and it goes off instantly.



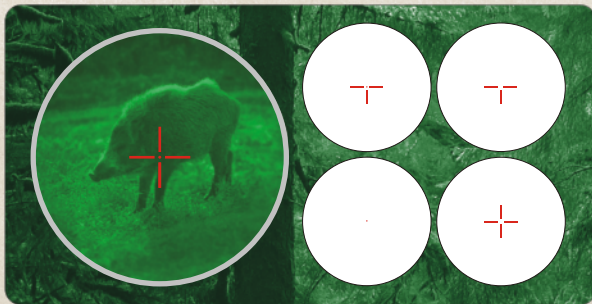


26115T Sentinel G2+ 3x50 | 26116T Sentinel G2+ 4x60

- Gen 2+ tube
- Two-color range finding reticle
- Lightweight and extremely durable plastic/Titanium body
- Built-in high-power PULSE non-hazardous IR illuminator with focusable beam
- Variable reticle brightness adjustment
- Precision internal windage/elevation adjustment
- Quick power-up
- Vertical positioning of the battery ensures uninterrupted power supply when shooting
- Stabilized power supply
- Weaver MIL-STD-1913 rail
- Remote control for secure foregrip attachment

26125T Sentinel G2+ 3x50 MD | 26126T Sentinel G2+ 4x60 MD feature a Mil-Dot reticle

Detailed information on the features of the Sentinel Night Vision Riflescopes series you can find in section "Gen1 Night Vision Riflescopes"



RETICLE

The Phantom features a variable brightness red-on-green. The hunter can choose one of three reticle options – single dot, German Sniper No.4 (3-bar) and a combination of the two - whichever best suits the specific situation. They are easily switched by the simple push of a button. If the reticle starts blinking, this indicates that the battery should be replaced within 15-30 minutes.

The Phantom takes into account all the requirements for modern night hunting. Utilising a military-style design and offering maximum functionality, the Phantom is an obvious choice for anyone who demands the highest quality and impeccable reliability. It is fully weatherproofed, thanks to a nitrogen filled optical channel and waterproofing to IPX6, and can be used anywhere. Arctic ice fields or desert sands, humid tropical forests or harsh Siberian taiga – the Phantom is ready to do its job regardless of weather conditions. The body of the Phantom is made of highly durable glass-filled plastic. The bodyshell design and high grade intensifier tubes ensure shockproofing to heavy calibres, including 9.3x62, 9.3x74 and 375H&H. The Gen 2+ tube has Automatic Brightness Control (ABC) and, coupled with the high quality, wide-aperture lens, provides a sharp and clear picture. The high light gain, combined with the built-in IR Illuminator, allows hunting even in situations of critically low night illumination (down to 10-4 lx – overcast starlight). The fast start-up function (the sight is "On" only while pressing a button) is very useful for making quick assessments. The problem of choosing a reticle has also been solved effectively. With the Phantom, you can choose the most suitable reticle configuration and change it by simply pressing a button. The voltage stabilisation system eliminates reticle shift even with an almost discharged battery. All main controls are on top of the body simplifying accessibility. These and other useful features make the Phantom one of the most interesting and promising new recruits to the class of elite night vision riflescopes.

TECHNICAL SPECIFICATIONS

Model	26057T / 26067T	26028T / 26068T	Model	26115T	26116T
Magnification, x	3	4	Magnification, x	3	4
Objective lens diameter, mm	50	60	Objective lens diameter, mm	50	60
Tube type, generation *	EPM66G2 / DEP XX1441, 2+	EPM66G2 / DEP XX1441, 2+	Tube type / generation	EPM66G2 / 2+	EPM66G2 / 2+
Resolution, lines/mm, min.	45	45	Resolution, lines/mm	45	45
Field of view, deg	13	11	FOV, at eye relief = 50mm, deg.	13	11
Maximum detection range, m **	1000	1000	Max. detection range, m **	1000	1000
Diopter setting, D	±3.5 / ±2.5	±3.5 / ±2.5	Minimum focus range, m	5	8
Battery type, voltage	1xAA (1.5V) or 1xCR123 (3V)	1xAA (1.5V) or 1xCR123 (3V)	Diopter setting, D	±3.5	±3.5
Eye relief distance, mm	50 / 53	50 / 53	Battery type / Voltage	3V / 2AA	3V / 2xAAA
Water intrusion rating	IPX6	IPX6	Eye relief, mm	50	50
Dimensions, mm	278 / 257 x 95 x 103	320 / 288 x 95 x 103	Dimensions, mm	288 x 90 x 100	320 x 90 x 100
Weight, kg	1.0	1.0	Weight, kg	1.0	1.0

* - the riflescopes use these or similar electronic-optical intensifiers.

** - in normal nighttime conditions - 0.05 lux (quarter moon), m



NIGHT VISION

ACCESSORIES

NIGHT VISION OPTICS



29061 NVMT Rifle Conversion Eyepiece

0.5x image magnification – not compatible with WP models

29043 NVMT Rifle Mount

Adapts NVMT to fit on a Weaver/Dovetail mount

29045 NVMT Rifle Conversion Kit

includes Rifle Mount, Riflescope Eyepiece and laser pointer to transform NVMT units into a riflescope. Not for use with WP models.

26041 NVMT 5 (3x42) Riflescope Kit

is designed for use with red dot laser as an adjustable aiming mark.

Accessories: Universal Tripod Kit, Digital Camera Adapter, DSAS, NVMT IR Flashlight, Yukon ATC Video Attachment



29051 NVMT Objective Lens 24 mm

Provides 2x magnification and is the lightest, most compact of all NVMT lenses. Not for use with **Waterproof units**



29052 NVMT Objective Lens 42 mm

Affords 3x magnification and is recommended for optimum performance with the NVMT rifle conversions and handheld monoculars. Not for use with WP models.



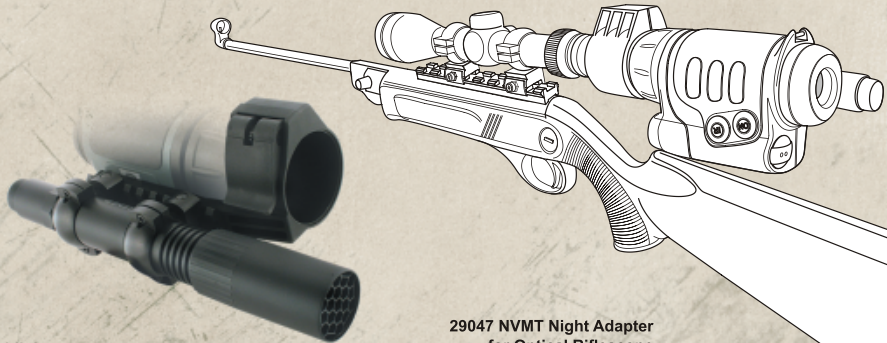
29053 NVMT Objective Lens 50 mm

Is perfect for photography and general observation with its 4x magnification capability - the highest in the NVMT series. Not for use with WP models.



29023 Digital Camera Adapter

Is recommended for all Yukon NVMTs and can also be used with Yukon 20-50x50 WA spotting scopes. Works with most compact digital cameras.



29074 NVMT IR Flashlight

Combines Yukon's popular IR unit with a mount to double, or even triple, the viewing distance of Gen 1 devices on the darkest of nights

29047 NVMT Night Adapter for Optical Riflescope

Combined with the NVMT 1 (2x24) or NVMT 4 (1x24) allows use of airsoft guns with a day optical riflescope for night shooting. The reticle of the riflescope is used for aiming. The adapter comes equipped with several adaptor rings to affix the night vision device onto the eyepiece of most day riflescopes. To maximise brightness of the image and range of shooting a 100mW IR Flashlight is included for attachment to the adapter.



29044 AK Side Mount Adapter

is used for mounting NVRS units on AK and SVD-type rifles



29091 NVRS 50 mm Doubler

1.7x Lens Converter giving 4.3x (on NVRS, NVRS-F or Sentinel 2.5x50 Gen 1 riflescopes) or 5x (on Sentinel G2+ or Phantom 3x50 Gen 2+ riflescopes) magnification.



29072 IR Flashlight with Weaver Mount

Attaches to accessory shoe of Yukon NVRS Tactical, NVRS-F, Sentinel, Sentinel G2+ or Phantom



27021 DSAS Directional Sound Amplification System

Uses a cardioid microphone to capture sounds. Can be used to listen or record. Fits NV monoculars plus 20-50x50WA
27022 DSAS Directional Sound Amplification System with Weaver Mount Uses a cardioid microphone to capture sounds. Can be used to listen or record. Fits NV weapon scopes



27014 Yukon-1 Laser Pointer
27012 Yukon-1 Laser Pointer with a Weaver 7/8" mount

Can be fixed on to the bodies of the riflescopes NVMT with Rifle Conversion Kit, NVRS Tactical, NVRS-F, Sentinel, Phantom or hunting weapons that have Weaver 7/8" mounting rails, providing an extra aiming mark when shooting at night.

27041 Yukon MPR Mobile Player/Recorder

is intended for video recording of incoming video signal from CCD array of Ranger/Ranger Pro 5x42 Digital or Yukon ATC Video Attachment. This unit is equipped with a standard soft case and a case for attaching to the Ranger/Ranger Pro's body.



29093 The NVB Tracker Doubler

1.7x Lens Converter giving 3.5x magnification with Tracker 2x24 models. Not for use with Tracker 1x24 Goggle or Tracker 3x42 models.



29032 NVMT Head Mount

The Compact Head Mount ensures stable positioning of a night vision device in front of the user's eyes, even while in fast motion (pacing, running, abrupt movements). The head mount is simple and convenient to use. All adjustments, such as the 90° flip-lock, set the night vision device's position relative to the eyes. Minimal protrusion of the suspension point reduces fatigue and load on the user's neck if operated for long periods of time. The head mount can also be paired with a camouflage cover. The Compact Head Mount combined with NVMT 1x24, Challenger or other Yukon night vision devices is ideal for high-tech ranger games, night hiking and air-soft shooting. Recommended for low magnification devices – high magnification means increased size and weight and therefore the potential for more neck strain.

TECHNICAL SPECIFICATIONS

Model	26041	Model	27041	Model	29072 / 29074
Image Tube Generation	1	Memory card type	SD	Power IR, mW	100
Dimensions, mm	162/261x82x60	Signal-to-noise meriy	90dB	Wavelength, nm	805
Weight, kg	0.5/0.7	Power supply, built-in	lithium battery	Length, mm	230
Magnification, x	3/1.5	Output power of headphones	50 + 50 mW	Width, mm	40 / 90
Resolution, lines per mm	36	Display type	2.5" TFT	Height, mm	43 / 35
Eye Relief, mm	12/45	Output frequency range	20Hz ~ 20KHz	Weight, kg	0.24
Lens diameter, mm	42	Frequency range during the recording	8KHZ ~ 48KHZ	Model	27022
Max. Range of Detection, m	200/150	Dimensions	90x60x17.5	Sound Amplification, dB	0-66
IR Illuminator range, m	100	Model	27012 / 27014	Frequency Response, Hz	500-10000
Power Supply, V	3 (CR123A)	Wavelength, nm	633	Dimensions, mm	310x45x53
Laser Pointer Wavelength, nm	633	dispersion Angle, mrad	1.0	Weight, kg	0.18
Laser Pointer Dispersion Angle, mrad	1.0	Angle Adjustment, ang.deg.	+ 2.0	Voltage, V	3
Laser Pointer Power, mW	4.0	Weaver Mount	Yes / No	Operation time, hour	300





catalog 2008

DAYLIGHT OPTICS



BINOCULARS

DAYLIGHT OPTICS



EXTREME
VISION

Expert & Expert Pro | Futurus Series |
Futurus Pro Series | Futurus Woodworth Series



INSIGHT PRO
BINOCULARS

FOR THOSE WHO VALUE
**RELIABILITY,
FUNCTIONALITY,
AND SUPREME
QUALITY**



FUTURUS
BINOCULARS

THE FUTURUS SERIES UTILIZES
THE BEST IN OPTICS
AND BODY CONSTRUCTION DESIGN.
SEE THE WORLD
IN HIGH DEFINITION.





EXPERT & EXPERT PRO

B I N O C U L A R S

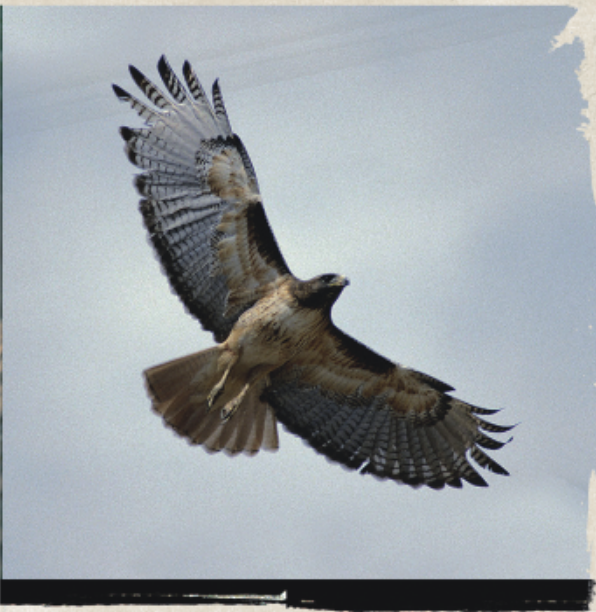
DAYLIGHT OPTICS



- Progressive optical system based on the 2nd type Porro prisms
- Three viewing modes (Daylight/Reflection/Contrast) in the Pro version
- Nitrogen purged optical system that prevents lenses from fogging
- Exterior flat protective lenses that guard against possible damage of the objective lenses
- Ergonomic eyecups maximize comfort and cut out extraneous light
- Adjustable eyepieces allow interpupillary movement
- Eclipse-M lens caps remain attached at all times and can protect the front optics from rain
- Durable glass-filled plastic body
- Antireflection coating based on Yukon's TRUE COLOR™ vacuum technology



Protective, flat front lenses permit use of the binocular in extreme environmental conditions protecting the objective lenses against scratches, dust, sand and moisture.



The "Contrast" mode is used in twilight conditions for enhanced image contrast and visual reduction of fog. The yellow filter used in the "Contrast" mode also features anti-haze properties.



Observation in "Reflection" mode neutralizes or minimizes the dazzling effect of light reflected from non-metallic surfaces (water, snow, ice or glass).



VIEWING MODES OF THE INSIGHT PRO BINOCULARS

Thanks to built-in light filters, the Expert Pro series allow observation in such modes as "Daylight", "Contrast" and "Reflection" - depending on environmental conditions. Changing the viewing mode is as simple as moving a switch.

The task of creating professional quality binoculars for the 21st century requires serious innovation. With this goal at the core of the new Expert binocular, Yukon designers equipped it with an advanced optical system. Porro prisms of the second type, fully multi coated optics and a nitrogen purged optical system are standard. The Expert line was intended from the outset as a platform for several future application developments. The Pro version of the line also boasts switchable internal filters to enhance the viewing experience. Really helpful in foggy conditions, or bright light, they work by polarizing the incoming light or cutting out some of the spectrum. Changing the viewing modes is as simple as moving a switch on the bottom of the binocular. Special exterior flat lenses shield the optics from the elements and possible damage. The solid, yet very light, glass-filled plastic body safely encases the internal moving parts. Designed as a waterproof, extra durable system the Insight binocular complies with IPX7 standards of water-resistance (IEC 60529). Comfortable in use, and to carry, the Insight binocular is surprisingly light and compact for the performance level it provides.

TECHNICAL SPECIFICATIONS

Model	22071	22081
Objective Lens Diameter, mm	40	40
Magnification, x	8	8
Eye Relief, mm	15.0	15.0
Exit Pupil, mm	5.0	5.0
Field of View, degree	8	8
Linear Field of View at 1000 m. Distance, m	125	125
Focusing Range of the Center Focus Mechanism, diopter	±6	±6
Focusing Range of the Eyepieces, diopter	±3.5	±3.5
Minimal Focusing Distance, m	5	5
Grade of Water-Resistance	IPX7	IPX7
Tripod Mount, inch	¼	¼
Dimensions, mm	200x136x80	200x136x80
Viewing Modes (Daylight, Contrast, Reflection), yes/no	Yes/No/No	Yes/Yes/Yes



FUTURUS & FUTURUS PRO

B I N O C U L A R S

DAYLIGHT OPTICS



22031 Futurus 7x50 WA

Provides comfortable viewing of moving objects due to wide field of vision and maximizes light transmission, so is the best choice for low light conditions. Specially designed with long eye relief to reduce eye fatigue. Perfect for those who wear corrective lenses or glasses.

22032 Futurus 10x50 WA.

Wide field of view. Optimum magnification makes the binoculars ideal for many outdoor activities.

Accessories:
Universal Tripod Kit, Binocular Adapter.

22033 Futurus 12x50 WA.

Good field of view combined with high magnification power. Probably offer the highest magnification that can be comfortably hand held for any length of time.

22034 Futurus 16x50

Intended for detailed study of more distant objects.

22035 Futurus 20x50

Offers the highest magnification whilst maintaining a compact body form.



22131 Futurus 8-24x50

The Futurus 8-24x50 Zoom Binocular is a 'universal' model combining the best features and magnifications of the Futurus range. The porro prism based optical schematic and fully multicoated optics provide high quality image, while a dependable variable power mechanism permits gradual changes to the optical magnification. A rubber-armoured carbon and plastic body, flip-up objective caps and an ergonomic housing further emphasize the high quality optical characteristics of this binocular.



- 22031C Futurus 7x50 WA Woodworth
- 22032C Futurus 10x50 WA Woodworth
- 22033C Futurus 12x50 WA Woodworth
- 22034C Futurus 16x50 Woodworth
- 22035C Futurus 20x50 Woodworth

Notice everything without being noticed thanks to the Futurus Woodworth camouflage.

Accessories:
Universal Tripod Kit, Binocular Adapter.



DISTANCE-MEASURING RETICLE

The reticle, built in to the right eyepiece of the binoculars, helps to determine a reasonably precise distance to any object with a height of 0.7m and 1.75m - the average height of the withers of a wild boar and of a buck with antlers respectively. The reticle is very easy to use and can be used instead of a laser range-finder - at least for close and medium distance.



The body of the binoculars is made of special plastic, so they benefit by lighter weight whilst at the same time being well protected against mechanical shock. The ergonomic body of the binoculars is fully rubber armored, so the binoculars do not slip even when holding them with wet hands. Moving elements in the binoculars, body seams, lens seal areas all have an extra level of moisture-resistance. According to the international standard IEC 60529:2001, the binoculars have a level of protection to IPX4 - safe operation under moderate precipitation.



22061 Futurus Pro 7x50WA

Classic hunting binoculars. A wide field of view makes viewing of fast-moving objects comfortable. Large eye relief (30mm) permits use whilst wearing glasses; excellent light-gathering capacity makes it possible to operate the binoculars at twilight.



22062 Futurus Pro 10x50WA

Optimal compromise between magnification and angular field of view. Being a universal multitask device, the binoculars solve the majority of tasks related to hunting, fishing, and nature observation.

22064 Futurus Pro 16x50

High magnification and compact dimensions. Good light-gathering capacity. The binoculars are designed for viewing at longer distances. Futurus Pro 16x50 are best suited for detailed observation of distant objects, hunting and for use in the mountains or in the steppes.



ORANGE LIGHT FILTER

The anti-fog (orange) filter allows through yellow, orange and red segments of the spectrum. This filter has a powerful anti-fog effect and considerably enhances contrast of the image at twilight. Eliminating haze, the filter improves the image quality when observing at large distances. The orange filter also operates well as a protective filter, but does reduce light transmission slightly.



PROTECTIVE LIGHT FILTER

The protective filter is meant for especially harsh operating conditions and protects the objective lens from dirt, fingerprints, dust, sand, and water. Allowing the entire visible spectrum through, the filter does not affect color balance and does not influence the amount of light entering the objective.

Say goodbye to hours spent searching for lost lens caps or dangling caps that get in the way of a majestic white tail or a breathtaking view. The exclusive ECLIPSE™ lens cap system prevents loss by securing the caps permanently to the Futurus body. The Futurus line of binoculars combines superb TRUE COLOR™ multi-coated lenses – giving accurate colour reproduction - and Yukon's patent protected body, which mixes ergonomic design with rugged good looks. With powers ranging from 7x to 20x, the Futurus line covers the most popular magnifications and is sure to be a future standard. The Futurus Woodworth binoculars offer camouflaged observation when in undergrowth.

The company Yukon Advanced Optics presents a new line of field binoculars Futurus Professional.

These binoculars fully meet the requirements of specialists who employ optics professionally, among them hunters, fishermen, zoologists, ornithologists and nature conservation officers, i.e. ideal for individuals, whose lives are closely related to wildlife, involving long periods of time under unfavorable conditions. The Futurus Pro series employ the classic Porroprism-based scheme, utilizing high quality BAK-4 prisms. All optical elements, lenses and prisms use Yukon's TRUE COLOR™ anti-reflective multicoated glass. This maximizes colour reproduction and ensures a crisp and clear picture as close as possible to what the human eye sees unaided

TECHNICAL SPECIFICATIONS

Model	22031	22032	22033	22034	22035	22061	22062	22064	22131
Lens diameter, mm	50	50	50	50	50	50	50	50	50
Magnification	7	10	12	16	20	7	10	16	8-24
Eye Relief, mm	21	14	12	10	10	30	16	14	14.3
Exit Pupil Diameter, mm	7	5	4.2	3.1	2.5	7	5	3	6.25-2.08
Field of View, °	6	6	5.3	4	3	6	6	4	4.4-2.2
Min. Focusing Distance, m	5	5	5	10	10	6	10	10	5
Length, mm	200	193	185	185	185	200	193	185	197
Width, mm	215	215	215	215	215	215	215	215	217
Height, mm	70	70	70	70	70	70	70	70	70
Weight, kg	1.03	1.03	1.0	1.02	0.99	1.0	1.0	1.0	1.0
Distance - Measuring Reticle	No	No	No	No	No	Yes	Yes	Yes	No
Light Filters included	No	No	No	No	No	Yes	Yes	Yes	No



**EXTREME
VISION**

SPOTTING

S C O P E S

DAYLIGHT OPTICS

Scout 20x50 | Scout 30x50 | Scout 30x50 WA |
Yukon 20-50x50 | Yukon 20-50x50 WA WP |
Yukon 6-100x100



YUKON 100x
HIGH POWER SPOTTING SCOPE



Yukon 6-100x100

- Incredible magnification range
- High light-gathering capability
- 45-degree revolving eyepiece
- Photo & Video Adaptable





SPOTTING SCOPES

DAYLIGHT OPTICS



21031 Yukon 100X 6-100x100

Yukon's unique 100X variofocal spotting scope features dual light path optics, a huge 6-100x magnification range, impressive 100 mm front lens and a revolving 45-degree eyepiece allowing 'prone' viewing.

Accessories:
100X Table Top Tripod, 100x Digital Camera Adapter, YD-100 Photo Kit, ATC Video Attachment



21031K Yukon 100X Tripod Kit

Allows the user to set up the scope directly out of the box – includes the Table Top Tripod
Accessories:
100x Digital Camera Adapter, YD-100 Photo Kit, ATC Video attachment

29014 100X Table Top Tripod

Compact, sturdy and suggested for use with all Yukon 100X scopes. Offers precision angular elevation adjustment.



21032 Yukon 100X LT 6-100x100 Spotting Scope 21032K Yukon 100X LT Tripod Kit

Features a straight-through eyepiece – more suitable for fast moving subjects.

Accessories:
100X Table Top Tripod, 100x Digital Camera Adapter, YD-100 Photo Kit, ATC Video Attachment



21014K Yukon 20-50x50
WA Tripod Kit
21014WPK Yukon 20-50x50
WA WP Tripod Kit

An 'All-in-One' kit combining the 20-50x50 with the Universal Tripod Kit. Maximises the 20-50x50 scopes versatility in various conditions. Our most popular combination.

Accessories:
ATC Video Attachment,
DSAS, Digital Camera
Adapter



21021 Scout 20x50
21022 Scout 30x50
21023 Scout 30x50 WA

All have a compact, rugged design with the 30x50WA featuring a wide-angle lens. Multicoated optics and rubber-armored body make the Scout a great entry-level draw-tube spotting scope and at a very affordable price.

Accessories:
Universal Tripod Kit, DSAS



21014 The compact Yukon 20-50x50 WA

is a unique scope featuring the Newtonian Reflector system, a wide-angle lens, rugged, rubber armored body and fully multicoated optics. A Waterproof variant is also available (#21014WP).

Accessories:
Universal Tripod Kit, DSAS, ATC Video Attachment, Digital Camera Adapter

The Yukon 100X's unique dual light path provides the highest magnification range available on the market. The 25 mm front lens, utilized for magnifications of 6-25x, provides a clear image perfect for shorter ranges and quicker target acquisition. And, with the flip of a switch, the light travels through the 100 mm lens for quality 25x-100x viewing. Designed with comfort in mind, the Yukon 6-100x100 is available with a straight or 45-degree revolving eyepiece and is composed of a durable composite body. The offset eyepiece of the 45-degree variant adjusts relative to the axis of the scope allowing 360 degree rotation. It allows the user maximum comfort in any position during observation. The light, compact, rugged, rubber-armored body and the fully multicoated lenses are trademarks of the Yukon 20-50x50 Variable Power Spotting Scope line. The waterproof version and video attachment make this already versatile line even more adaptable. Each variant of the 20-50x50 comes with a carrying case as standard. Yukon's exclusive Universal Tripod Kit is available as the perfect accessory. The Scout 30x50 WA's collapsible design, multicoated lenses and rubber-armored body make it the perfect choice for those who desire introductory or compact optics. With plenty of power for a broad range of uses, the Yukon series of spotting scopes are functional at home, for viewing wildlife, for traveling, hiking or prolonged use during nature observation.

TECHNICAL SPECIFICATIONS

Model	21031/21031K	21032/21032K	Model	21014	21021	21022/21023
Main Objective Magnification, x	25-100	25-100	Objective Lens, mm	50	50	50
Auxiliary Objective Magnification, x	6-25	6-25	Magnification, x	20-50	20	30
Main Obj. Lens Diameter, mm	100	100	Eye Relief, mm	14	12	12
Auxiliary Obj. Lens Diameter, mm	25	25	Exit Pupil Diameter, mm	2.5 - 1	2.5	1.7
Eye Relief, mm	12-16	12-16	Diopter Adjustment, D	±5	±5	±5
Angle of the eyepiece according to the optical path of the device, °	45	0	Field of View, °	2°30' - 1°9'	3.1°	1.8° / 2.3°
FOV, m at the distance of 1000 m			Focusing Range, m	10 ~ ∞	10 ~ ∞	15 ~ ∞
- by magnifying power of 100x	11	11	Tripod Mount, inch	1/4 & 3/8	1/4	1/4
- by magnifying power of 25x	39	39	Dimensions, mm	240x110x76	230x70x70	230x70x70
Dimensions, mm	425x119x185	425x119x185	Weight, kg	0.7	0.45	0.45
Tripod included, yes/no	No / Yes	No / Yes				
Tripod Mount, inch	1/4 & 3/8	1/4 & 3/8				
Weight, kg	1.5 / 2.1	1.5 / 2.1				



SPOTTING SCOPES

A C C E S S O R I E S

DAYLIGHT OPTICS



EXTREME
VISION



CAPTURE THE WONDERS OF NATURE WITH THE YUKON 6- 100X100 AND YUKON ATC VIDEO ATTACHMENT

Now not only can you view distant landscapes and wildlife clearly, further than you have ever been able, but you can preserve those moments through digital photography and video!

27043 Yukon ATC Video Attachment

Allows users to make video and photo recording independently, as well as with the Yukon 6-100x100 and 20-50x50 spotting scopes plus the NVMT series, Exelon and NV 5x60 night vision scopes.

The Yukon ATC includes a video attachment, adapters to fit the eyepiece of various Yukon optical devices plus a Yukon universal tripod for independent use of the video attachment.



29012 Car Window Mount

Designed for motorists who want to see it all. Also found in the Universal Tripod Kit.



29013 The versatile Universal Tripod Kit

is a true Yukon product. Provides three functions in one package: Table Top Tripod (29011), Car Window Mount (29012) and Yukon's unique Arm-Stabilization Pad.



29024 Yukon 6-100x100's Digital Camera Adapter

is a great accessory for 6-100x100 models. The adapter allows users to take digital pictures and will accommodate most digital cameras. Not for use with the LT model



27031 Yukon YD-100 Photo Kit

The Yukon YD-100 Photo Kit features a 5 megapixel fully-featured digital camera and allows you to maximise the photographic potential of the 100X scope. The quality of pictures taken with the spotting scope and this photo kit will forever shift your expectations. Distance will no longer stand in the way of the perfect picture. The YD-100 can also be used as a compact, stand-alone 3x optical magnification digital camera. It is optimized to perform with the 100X via the specially matched YD-100 digital camera adapter.

The Yukon YD-100 Photo Kit is meant for those who are certain the Yukon 6-100x100 possesses comprehensive facilities and would like to fully use its potential. The quality of pictures taken with the spotting scope and this photo kit will forever shift your expectations. Distance will no longer stand in the way of the perfect picture. Once you get used to your camera, you can always pair it with the Yukon 6-100x100 spotting scope and with the Yukon 100x digital camera adapter.



27021 DSAS – Directional Sound Amplification System

Unique cardioid microphone is a great accessory for any binocular or a spotting scope.

TECHNICAL SPECIFICATIONS

Model	27031	Model	29024
Sensor	CCD array 5.2 Mp	Max. weight of photocamera, kg	1.0
Focal length, mm	5.5 ~ 16.5	Dimensions, mm	180 x 85 x 134
Relative aperture	F 2.8 ~ 4.8	Weight, kg	0.15
Zoom, optical/digital, x	3-x/4	Model	27021
Display	2.5" LTPS LCD	Sound Amplification, dB	0-66
Exposure, sec.	1/2 ~ 1/2000	Frequency Response, Hz	500-10000
ISO	Auto, 64, 100, 200	Dimensions, mm	310x45x53
Video recording	320 x 240 @ 20 shots/sec	Weight, kg	0.18
Autorelease, sec	2, 10, 2+10	Voltage, V	3
Internal memory, Mb	16	Model	27043
External memory, max, Gb	1 (SD card)	Sensor Type	CCD
Power supply	Li-Ion / AC-DC (3A/5V)	Resolution, TV lines	420
Weight, kg	0.126	Resolution, pixels, HxV	512x492 (NTSC) / 512x582 (PAL)
Dimensions, mm	91x55x25	Video Output	PAL / NTCS *

* - depending of the region of sale



www.yukonopticsglobal.com

